

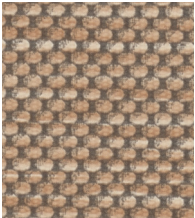
Denim
539568



Alabaster
539571



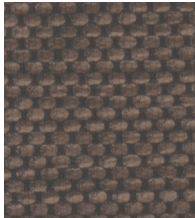
Stone
539572



Peachy
539569



Rusted
539559



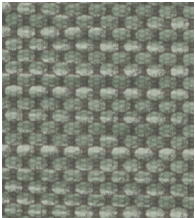
Earthen
539562



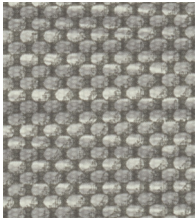
Reed
539573



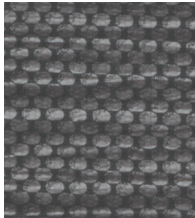
Glow
539575



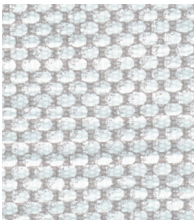
Lichen
539564



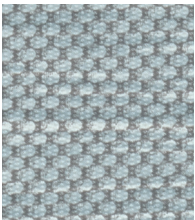
Gray Pine
539563



Smoke
539560



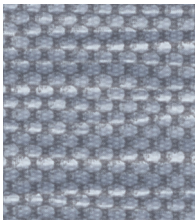
Cloudy
539570



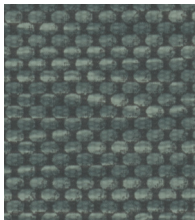
Rain
539567



Dandelion
539574



Chambray
539566



Crocodile
539565



Content	100% PVC face, polyester terry loop knit backing
Features	Eco-preferred construction - Phthalate free - Antimicrobial (MR) and flame retardant (FR) free - Complies with Section 101: Lead, and Section 108: Phthalates of the CPSIA and RoHS directive (Updated March 2015)
Finish	PreFixx® protective finish for increased stain resistance and easy cleaning. Bleach cleanable and may be disinfected with a variety of hospital grade disinfectants without discoloring or damaging the finish. Disinfection does not replace the need for regular care and maintenance. For a list of recommended disinfectants, view the Coated Fabrics Chemical Resistance Technical Bulletin located at https://www.omnova.com/fileadmin/Resource_Center/Coated_Fabrics/Technical_Bulletins/OMN-ChemRes-TB.pdf .
Weight	28 oz/lin. yd [18.7 oz/yd ²] / 849 g/lin. m [619 g/m ²]
Width	54 in [137 cm]
Repeat	18" wide x 18" high
Performance Requirements	Meets or exceeds ACT Performance Guidelines CFFA Healthcare 201 Certified



Also meets or exceeds:

- CFFA-1a Wyzenbeek - 1.3 million double rubs (cotton duck abradant)
- BIFMA, Class A
- California Technical Bulletin 117-2013, Section 1
- NFPA 260, Class 1
- UFAC Fabric, Class 1

Applications

Indoor

- Corporate Office • Food Service • Healthcare • Hospitality and Entertainment
- Recreational Vehicles • Retail

Though our upholsteries can be used in many applications, customers are responsible for selecting an upholstery with attributes that meet the requirements of the specific end-use application – not all upholstery is suitable for all applications.

Multiple factors affect fabric durability and appearance retention, including end-user application and proper maintenance. Wyzenbeek results above 100,000 double rubs have not been shown to be a reliable indicator of increased fabric lifespan.

For additional cleaning instructions and detailed specification information, visit: www.omnova.com



North American Office
25435 Harvard Road
Beachwood, OH 44122
United States
PHONE +1 800 457-9900



ALL OMNOVA PRODUCTS AND SERVICES ARE OFFERED AND SOLD SUBJECT TO THE OMNOVA STANDARD TERMS AND CONDITIONS OF SALE AGREEMENT SET FORTH AT WWW.OMNOVA.COM

*ACT Performance Guidelines icons are registered certification marks owned by the Association for Contract Textiles, Inc.
CFFA Healthcare 201 icon is a registered certification mark owned by the Chemical Fabrics & Film Association, Inc.
BOLTAFLEX, NAUTOLEX and PREFIXX are registered trademarks of OMNOVA Solutions Inc.
Designed and manufactured by OMNOVA Solutions.

© 2023 OMNOVA Solutions Inc. DTC. Jan 2024.
OMNOVA – A Division of SURTECO.